



SAY IT WELL

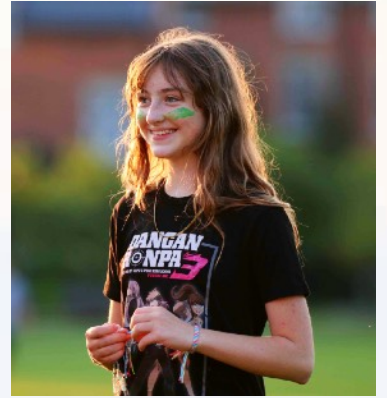
# Debate Camp

*Overall, a tremendous experience and a positive introduction to debate .  
Thanks so much for a fantastic week!*

*Parent 2022*

# OVERNIGHT DEBATE CAMP

COMMON QUESTIONS - ANSWERED





**OVERVIEW:** Debate Camp has been conducting Overnight Debate Camps for youth since 2002. A fun, safe and welcoming space in which to learn and develop debate and public speaking skills - - all while enjoying a traditional overnight camp experience!

**SUPERVISION RATIO:**

Teaching: **1:8**  
Supervision **1:6**



**IS THE PROGRAM DIFFERENT FROM DAY CAMP?**

YES! Overnight Camp is a memory-maker; with academic and recreational program options from 9:00am through until bedtime (10:00pm). Evening recreational blocks, intensives on global issues, swim outings and local sight seeing are all unique to our Overnight Camp program.

**HOW DO I GET TO OVERNIGHT CAMP?**

Parent drop-off is welcome; anytime before 4:00pm on opening day. We also meet campers at nearby international airports, ferry terminals and train stations and provide direct shuttle service to / from camp. For full details of our Overnight Camp transportation options click [HERE](#)

**HOW ARE THE DORMITORIES ORGANIZED?**

Debate Camp maintains supervised and gender separate dorms, including gender neutral spaces. Rooms are typically double occupancy, with 3 person rooms permitted.

**WHAT TO BRING?**

Typically campers bring all their comfort provisions, ie. bedding, soap, towel and clothing suitable to an indoor and outdoor program, (inclusive of optional swimming and recreational outings). Laptops are permitted and internet access is available at all of our locations. A detailed list of things to bring is provided in advance. All educational resources are provided.





### WHAT IS YOUR PHONE USE POLICY?

Debate Camp permits campers to use and keep their phone for the duration of Debate Camp. We do however sometimes request, that they be turned over or off when seen to be a distraction to the session underway.



**HOW CAN I STAY CONNECTED WHILE AT DEBATE CAMP?** Debate Camp encourages campers to keep in touch with friends and family while at camp, particularly to ensure safe arrival and confirm travel on closing day. Debate Camp posts permitted photos on our Facebook and Instagram daily during all camp sessions

For a further look at life at Debate Overnight Camp - see our posts from July 2022 - [HERE](#)





*My camper had the best time, learned a lot, made new friends and overall cannot stop talking about her experience!*  
*Parent 2022*



#### **CAMPUS SECURITY AND HEALTH SERVICES**

All Debate Camp host school locations have 24 hour security services. Healthcare services are also available on campus, where campers and staff are able to be assessed by a medical professional if feeling unwell. Covid protocols maintained by Debate Camp (in 2022) will be updated for 2023 and appear **HERE**

**FREIND REQUESTS?** Yes, absolutely!

#### **DIETARY ACCOMMODATIONS?**

Yes, Debate Camp ensures all dietary information noted on camper Health & Medical Forms are accommodated.

**WHAT IS YOUR REFUND POLICY?** All Debate Camps, day or overnight are fully refundable up to 14 days in advance of the start of camp. After 14 days we issue a 50% refund. After camp has started we are unable to issue refunds of any kind. Credit to upcoming program may be considered upon review of the cancellation circumstance inside the 14 day period.

**CAN I SPEAK WITH SOMEONE TO ANSWER FURTHER QUESTIONS?** Always! The Debate Camp Office in Atlantic Standard Time [EST + 1] is open for business each day from 10:00am until 5:00pm in the pre-camps season: **1 - 8 8 8 - 5 1 2 - 8 1 5 4** or email: **info@debatecamp.com**

[www.debatecamp.com/overnight](http://www.debatecamp.com/overnight)