

German International School Toronto



# Building Charakter

**Grades:**

High School and IB

Middle School

Primary School

Kindergarten





**In a fast-changing world, the ability to think critically, be culturally aware, and lead with empathy and respect are essential for success. That is why the German International School Toronto combines academic rigour with an education that builds CHARAKTER.**

Rouven Hollmann  
*Principal*



# A school ~~only for Germans~~ for everyone

The German International School Toronto (GIST) is an independent school in Toronto and part of an extensive global network of over 135 **German Schools Abroad**. These schools follow a German curriculum and are committed to the highest educational and academic standards. Starting in 2024, the German International School Toronto joined the ranks of **IB World Schools**, making it one of the top independent high schools in Toronto. It offers the IB Diploma Programme (DP) for eleventh and twelfth graders.

Being a German School Abroad means creating a learning environment conducive to intercultural exchange and dialogue. We are proud to be home to a diverse community of global citizens who want to give their children an international outlook.

In other words:

**We welcome all families,  
whether you speak German  
or not!**

# 5 reasons to join GIST.

## 1. You want your child to excel.

Our school follows a state-of-the-art curriculum that blends the accelerated and competency-based German curriculum with the highly respected Ontario Curricu-

lum. We are proud of the results of third-party inspections and standardized tests, both Canadian and German, which prove the school's overall quality.

### How GIST ensures high academic rigour

- **German Curriculum:** The German curriculum stands out for its interconnection across subjects and years, often following a spiral approach where topics are revisited at higher levels. This helps students develop strong competencies for the IB Diploma Program, preparing them for university studies across all fields.
- **German Teaching Approach:** The German teaching approach focuses on fostering independent thinking and action, as opposed to simply passing exams or completing coursework. Lessons are designed with varying levels of complexity, allowing students to engage with the material at their own pace and continue developing their understanding, as opposed to systems that prioritize knowledge reproduction.
- **Frequent evaluations:** We see evaluations and certifications from external parties as an opportunity to develop. German, Canadian and International institutions frequently evaluate our school, and we are proud to excel in these evaluations.



Exzellente  
Deutsche  
Auslandsschule



Ministry of Education



## 2. You want your child to speak multiple languages: Fluently.

We embrace a trilingual approach to education, offering a rich linguistic environment in German, English, and French. Our commitment to nurturing global citizens is reflected in our belief that multilingualism is a cornerstone of intellectual and cultu-

ral growth. At our school, we go beyond traditional language education, providing a dynamic and immersive experience that goes hand in hand with our rigorous academic curriculum.

### How GIST ensures acquiring multiple languages

- **Language Support Program:** Our dedicated language support programs are designed to accommodate learners of all levels, providing comprehensive support for those new to the German, English or French language. Our support programs consist of specialized classes during the school day, extra classes in the afternoon, and support guidance from professional language coordinators for families.
- **Language-Sensitive Instruction:** At GIST, we ensure that your child learns essential vocabulary in all subjects, helping them to follow the content and improve their language skills simultaneously.
- **Multilingual environment:** Being immersed in a bilingual environment has been proven to enhance language acquisition skills, cognitive flexibility, and cultural awareness. At GIST, your child will be equally immersed in German and English daily.

**“We were unsure if our children would thrive at GIST without a German-speaking background, but they were welcomed and supported from day one. Now, they switch easily between English and German, and our eldest has even earned her DSD I certificate. What a gift for their future!”**



Margarita Dejak  
Mother of 5 children at GIST

### 3. You want your child to be seen and heard.

We want to bring out the best in every student. Each of our teachers knows our students, who are supported and chal-

lenged individually and according to their talents. As a result, our students usually outperform their peers.

#### How GIST ensures individual support

- **Small class sizes:** Our average class size ranges from 12 to 18 students. With an average class size of 12 to 18 students, our teachers can focus on each child's needs, offering tailored guidance and support to foster individual growth.
- **Double-staffing in main subjects:** In the main subjects such as German, Maths and English we are always double-staffed. This way, we can teach your child according to their level within one class.
- **Skilled staff in Afternoon Care:** Our Afternoon Care has skilled teachers who support your child with homework. Our commitment to individualized support continues beyond the classroom. Our Afternoon Care program is staffed by experienced and dedicated educators who provide assistance with homework and encourage the development of independent learning skills. They work closely with students to help them stay on track with their studies and reinforce the lessons learned during the day. Afternoon Care at GIST not only supports academic growth but also nurtures your child's social and emotional development in a structured and caring environment.

**“The GIST encourages growth, development and innovation through every aspect of its community. Their steadfast commitment is the main reason why our children thrive so well in this wholesome environment.”**



Jordana Mullings  
Mother of 2 children in Grade 3

## 4. You want your child to have all the opportunities in the future.

We are experts in transitions. Our founding principle was to ensure that all our students could seamlessly enter the German and Canadian school systems. After 25 years, we proudly ensure our students can

enter universities worldwide through our IB Diploma Program. Our families experience smooth transitions and their children usually excel compared to their peers.

### How GIST ensures smooth transitions



**Early guidance:** We offer an admissions process, that is personal. We value getting to know you through in-depth conversations with your family and by involving our teachers early on in the process. That allows us to understand your child's learning needs before school begins, ensuring your child is set up for success from day one.



**Welcoming support:** Our teachers are experts in facilitating smooth transitions for new children, even mid-year, ensuring they quickly adapt and thrive. Our supportive school community also plays a crucial role in making your child feel welcomed and integrated from the start.



**Internationally recognized degrees:** At GIST, we offer the bilingual International Baccalaureate (IB) Diploma Program, the Ontario Secondary School Diploma (OSSD), and the German Language Diplomas (DSD I and DSD II). The DSD diplomas certify proficiency in German at B1 and C1 levels, ensuring students are well-prepared for higher education or careers in Germany, Canada and internationally, providing a seamless transition into life after school.

**“I often reflect on the wonderful education I received at GIST. The small class sizes and the great teaching staff led to a personalized and high-quality education, which created a solid base for my future.”**



Lena Donald  
Alumn of GIST, Sr. Assistant Customer  
Strategy & Planning Manager at Unilever

## 5. You want your child to be a researcher.

STEAM\_MINT @ GIST follows the teaching principle of research-based learning and offers the opportunity to go deeper into inquiry-based learning. In other words, your child is encouraged to ask questions, collect ideas, make hypotheses, test them

by carrying out experiments, and observe, record, describe, and discuss results. The students receive a comprehensive education in a learning environment that combines scientific work with scientific and humanistic knowledge.

### How GIST fosters knowledge in STEAM subjects

- **Lab by BASF:** With BASF's support, your child can access a state-of-the-art lab with an exclusive laboratory kitchen. Here, students experiment, research, design, and build.
- **Collaboration with the University of Toronto:** Starting at grade 7, your child will regularly visit UofT's laboratory to conduct experiments such as DNA analyses. This experience nurtures their interest in natural sciences and offers a glimpse of university life.
- **Extracurricular Activities:** Your child can join clubs that ignite their passion for coding and robotics. In partnership with CodeItHacks, we offer various courses starting from Junior Kindergarten and up.

**“Going to the lab at the University of Toronto was so exciting! Our teacher set up a detective case where we had to analyze DNA to identify the murderer. It was so hands-on, and working with real lab equipment made it feel like we were actually solving a mystery.”**



Loui Thony  
Student in Grade 8



# Our Grades

**New  
2026/2027!**  
Choose Your IB  
Stream: English-  
French or English-  
German

## High School (9-10) and IB Diploma Program (11-12)



### Inquirers, Thinkers, Risk-Takers.

The IB Diploma Program is a challenging and well-rounded program that helps students become inquiring, knowledgeable, and caring individuals. Our students at GIST can choose for Grades 11 and 12 between two IB Streams: English-German or English-French. That means: All subjects are taught in English. For language acquisition, students choose between German A: Language and Literature or French B: Language Acquisition, with English also offered at Higher Level. Students who choose German graduate with the bilingual IB Diploma, a strong credential that reflects high-level academic success in two

languages. In preparation for the IB Diploma Program, GIST's grades 9/10 continue the school's philosophy of inquiry-based learning. High academic standards are fostered by engaging learning experiences both in the classroom and in our surrounding areas. Our high school classes combine the skills, strategies and subject areas of the German and Ontario educational systems. At this level, some of our classes are taught in German and some in English to satisfy requirements for both Germany and Canada. In grade 10, students take the OSSLT, and throughout their high school years, they are guided through obtaining the volunteer hours required in Ontario.

**“We chose the High School at GIST for our son so he has the opportunity to get both the German IB and the Ontario High School Diploma, which allows him to have many options for great universities in Canada, Germany and internationally. What we truly value is that GIST encourages the students to think critically, debate, and formulate their own ideas. We have confidence that our son is well prepared for his next chapter in life.”**



Irem Lutz  
*Mother of a student in Grade 11*

# Ten Reasons for the IB Diploma Program

## 1. It increases academic opportunity.

Research shows that DP graduates are much more likely to be enrolled at top higher education institutions than entrants holding other qualifications

## 2. IB students care about more than just results

Through creativity, action, service (CAS) you learn outside the classroom and develop emotionally and ethically as well as intellectually.

## 3. It encourages you to become a confident and independent learner

Research shows that DP graduates are much more likely to be enrolled at top higher education institutions than entrants holding other qualifications

## 4. It's an international qualification

The DP is recognized globally by universities and employers.

## 5. Graduates are globally minded

Language classes encourage an international mindset, which is key for increasingly globalized societies.

## 6. The IB encourages critical thinking

Learn how to analyze and evaluate issues, generate ideas and consider new perspectives.

## 7. DP students have proven time management skills

Take good study habits and strong time management to further education and the working world.

## 8. It assesses more than examination techniques

Learn to understand, not just memorize facts or topics and prepare for exams.

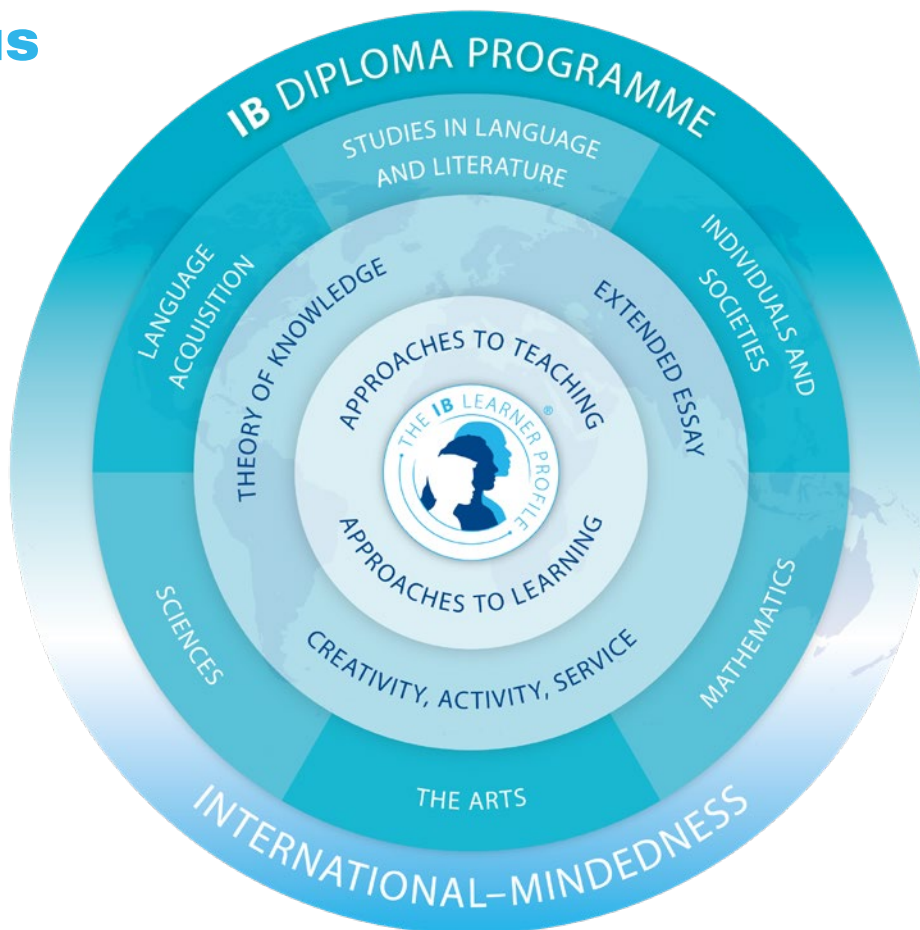
## 9. Subjects are not taught in isolation

Theory of knowledge (TOK) classes encourage you to make connections between subjects.

## 10. It encourages breadth and depth of learning

You are able to choose courses from six subject groups and study subjects at different levels.

# Syllabus



	Grade 9	Grade 10	Grade 11 - IB	Grade 12 - IB
German	5	5	5/0*	5/0*
French	4	4	0/5*	0/5*
English	4	4	5	5
Arts	2	2		
Maths	5	5	5	5
Biology	2	2	4	4
Physics	2	2		
Chemistry	2	2		
Computer Science	2	2		
Geography	2	2	4	4
History	2	2	4	4
Civics and Citizenship	2	2		
Creativity, Activity, Service			1	1
Theory of Knowledge			3	3
Sports	2	2		
<b>Hours per week</b>	<b>36</b>	<b>36</b>	<b>31</b>	<b>31</b>

\* Students choose either German or French for Language Acquisition

# Tuition Fees 2026/2027

	Local Tuition	Corporate-funded Tuition*
Registration Fee	\$150	\$150
Acceptance Fee	\$2,500	\$2,500
School Tuition 7:45 AM – 1:15/3:15 PM	\$20,330	\$29,630
Aftercare until 3:15 PM	\$2,700	Included
Aftercare until 5:30 PM	\$3,450	\$750

Additional costs apply for textbooks, extra-curricular activities, school uniforms, and overnight camps.

\* Families with non-permanent residency in Canada, holding a fixed-term entry permit and receiving employer support for tuition fees, must follow the corporate-funded tuition schedule. To be eligible for the local tuition rate, written confirmation from the employer may be required.

## Discounts

- A sibling discount of 10% of the tuition fee is granted for the second and subsequent sibling(s) in the order of birth.
- Early-payment discount of 3% on the Tuition Fee for the following academic year when full payment is received by June 1.
- Each student enrolled subject to the tuition schedule for local families will receive an annual \$2,500 tuition fee reduction when they enter the fifth year of enrollment and all subsequent years.

## Tuition Assistance

GIST awards tuition assistance in a limited number of cases, taking into account the students' financial needs, as assessed by Apple Financial Services. Assistance is limited to a maximum of 50% of the cost of tuition and does not apply to registration, acceptance and extended care fees. Eligibility will ultimately be determined at the discretion of the Finance Committee of the Board of Trustees.

In order to qualify for tuition assistance, an application through Apple Financial Services is required. Apple Financial Services provides the financial analysis and assistance recommendations for over 170 independent school across Canada and supports GIST in making a sound decision on tuition assistance.

## Middle School (5-8)

### Building confidence through competency and inquiry.

Our Middle School Program offers a curriculum that integrates the best of Germany and Canada, focusing on competency-oriented and content-enriched learning. Rather than traditional subject divisions, our STEAM\_MINT@GIST program combines Science, Technology, Engineering, Arts, and Math, fostering inquiry-based learning. Additionally, what is known as

Social Studies in Ontario schools is divided into History and Geography (following the curriculum of Thuringia) and Social Studies (addressing the socio-cultural History of Canada, Ontario, and Toronto).

In our Middle School, we encourage our students to build confidence and engage in our school community and beyond.

Under the guidance of our teachers, they regularly present their artistic, scientific, and academic work in their classes and to the whole school community.

## 3 aspects that make our Middle School stand out:



**The best of two curricula:** Our middle school program blends the analytical rigour and in-depth subject knowledge of the German curriculum with the inclusivity and innovative teaching strategies of Ontario's curriculum, creating a rich and comprehensive educational experience.



**STEAM\_MINT@GIST program:** Our Middle School excels in STEAM subjects, offering students hands-on experience in our own laboratory and through our collaboration with the University of Toronto, where they conduct experiments at an undergraduate level.



**Encourage to grow:** Our yearly speech competition fosters critical thinking and debating skills by encouraging students to develop their own viewpoints and build the confidence to articulate and defend them with conviction.



**“I was so proud to see my daughter on stage at the speech competition! She spoke with so much enthusiasm and confidence as I had never seen her before. The teachers of GIST coached her intensively in the weeks before and helped her grow in many ways.”**



Noella Gort  
*Mother of a student in Grade 6*

# Syllabus

	Grade 5	Grade 6	Grade 7	Grade 8
German	5	5	5	5
French	4	4	4	4
English	5	5	5	5
Music	2	2	1	1
Arts	2	2	2	2
Maths	5	5	5	5
Biology	2	2	2	2
Physics			2	2
Chemistry			2	2
Computer Science	2	2	2	2
History	2	2	2	2
Geography	2	2	1	1
Social Studies	1	1		
Ethics	2	2	2	2
Sports	2	2	2	2
<b>Hours per week</b>	<b>36</b>	<b>36</b>	<b>37</b>	<b>37</b>



# Tuition Fees 2026/2027

	Local Tuition	Corporate-funded Tuition*
Registration Fee	\$150	\$150
Acceptance Fee	\$2,500	\$2,500
School Tuition 7:45 AM – 1:15/3:15 PM	\$20,330	\$29,630
Aftercare until 3:15 PM	\$2,700	Included
Aftercare until 5:30 PM	\$3,450	\$750

Additional costs apply for textbooks, extra-curricular activities, school uniforms, and overnight camps.

\* Families with non-permanent residency in Canada, holding a fixed-term entry permit and receiving employer support for tuition fees, must follow the corporate-funded tuition schedule. To be eligible for the local tuition rate, written confirmation from the employer may be required.

## Discounts

- A sibling discount of 10% of the tuition fee is granted for the second and subsequent sibling(s) in the order of birth.
- Early-payment discount of 3% on the Tuition Fee for the following academic year when full payment is received by June 1.
- Each student enrolled subject to the tuition schedule for local families will receive an annual \$2,500 tuition fee reduction when they enter the fifth year of enrollment and all subsequent years.

## Tuition Assistance

GIST awards tuition assistance in a limited number of cases, taking into account the students' financial needs, as assessed by Apple Financial Services. Assistance is limited to a maximum of 50% of the cost of tuition and does not apply to registration, acceptance and extended care fees. Eligibility will ultimately be determined at the discretion of the Finance Committee of the Board of Trustees.

In order to qualify for tuition assistance, an application through Apple Financial Services is required. Apple Financial Services provides the financial analysis and assistance recommendations for over 170 independent school across Canada and supports GIST in making a sound decision on tuition assistance.

## Primary School (1-4)

### Staying curious through a balance of structure and creativity.

The first day of school holds a special place in everyone's memory. At GIST, we strive to make this day truly unforgettable. That's why we celebrate it by embracing a cherished German tradition—the colourful "Schultüten" brought to school by children. But the first day will not be the only day your child will remember.

At GIST, we strive for a balance between structure and creativity. Structure so your child can organize themselves, learn how to learn, and be immersed in a productive learning environment. Creativity, so your child stays curious, finds their own ways to express themselves and will never forget their time at GIST. We provide exceptional care for each student and support them in their individual journeys.

## 3 aspects that make our Primary School stand out:

- **Structured schooldays:** In our primary school, we emphasize a well-structured environment that supports students with clear routines and guidance, creating the perfect setting for effective learning and personal growth.
- **Math competency:** The German primary school math curriculum emphasizes strong foundational skills and logical reasoning from an early age, introducing complex concepts like multiplication and fractions sooner than Ontario's curriculum. This approach builds a deeper understanding of core mathematical principles, making it more effective for advanced studies in math and science.
- **Cursive Writing:** GIST teaches cursive writing, because it is beneficial for children in primary school as it enhances fine motor skills, improves hand-eye coordination, and supports cognitive development by engaging both the brain's visual and motor regions, which can also aid in learning and memory retention.



**“One day, our twins came home bursting with excitement, eager to tell us about their adventures as detectives. Their teacher had crafted a year-long detective case to introduce new topics in a fun and engaging way. We were truly impressed by the creativity and dedication that went into this. It’s hard to express just how much we appreciate the thoughtfulness of the teachers at GIST. Thanks to their efforts, our twins are not only excited to learn, but they will always look back on their first years at school as a time of joy and discovery.”**

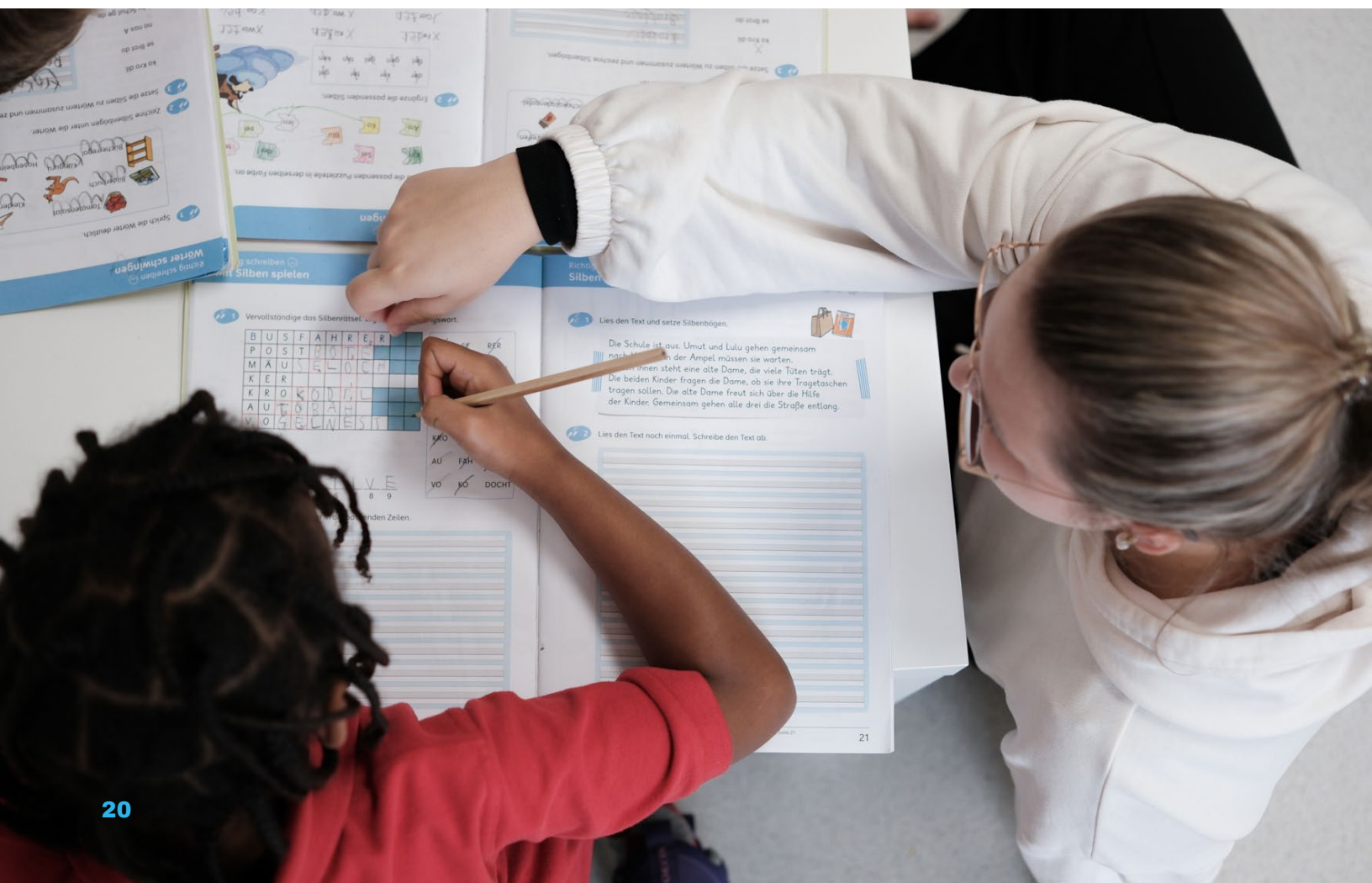


*Scheidegger family  
Parents of two sons in Grade 2*

# Syllabus

The table below shows the number of hours per week dedicated to each subject for each grade level.

	Grade 1	Grade 2	Grade 3	Grade 4
German	6	6	6	6
French	2	2	2	2
English	5	5	5	5
Music	1	1	1	1
Arts	2	2	2	2
Maths	5	5	5	5
Sciences	3	3	3	3
Computer Science	1	1	1	1
Ethics	1	1	1	1
Sports	2	2	2	2
<b>Hours per week</b>	<b>28</b>	<b>28</b>	<b>28</b>	<b>28</b>



# Tuition Fees 2026/2027

	Local Tuition	Corporate-funded Tuition*
Registration Fee	\$150	\$150
Acceptance Fee	\$2,500	\$2,500
School Tuition 7:45 AM – 1:15 PM	\$19,160	\$28,300
Aftercare until 3:15 PM	\$2,700	Included
Aftercare until 5:30 PM	\$3,450	\$750

Additional costs apply for textbooks, extra-curricular activities, school uniforms, and overnight camps.

\* Families with non-permanent residency in Canada, holding a fixed-term entry permit and receiving employer support for tuition fees, must follow the corporate-funded tuition schedule. To be eligible for the local tuition rate, written confirmation from the employer may be required.

## Discounts

- A sibling discount of 10% of the tuition fee is granted for the second and subsequent sibling(s) in the order of birth.
- Early-payment discount of 3% on the Tuition Fee for the following academic year when full payment is received by June 1.
- Each student enrolled subject to the tuition schedule for local families will receive an annual \$2,500 tuition fee reduction when they enter the fifth year of enrollment and all subsequent years.

## Tuition Assistance

GIST awards tuition assistance in a limited number of cases, taking into account the students' financial needs, as assessed by Apple Financial Services. Assistance is limited to a maximum of 50% of the cost of tuition and does not apply to registration, acceptance and extended care fees. Eligibility will ultimately be determined at the discretion of the Finance Committee of the Board of Trustees.

In order to qualify for tuition assistance, an application through Apple Financial Services is required. Apple Financial Services provides the financial analysis and assistance recommendations for over 170 independent school across Canada and supports GIST in making a sound decision on tuition assistance.

## Kindergarten (PreK, JK, SK)

Kindergarten is a German word! It reflects the German understanding of early childhood education: “Kindergarten” differs from “School”. Our Kindergarten is open for all children ages three to five. It is not necessary to speak English or German to join our Kindergarten. A child-centred and play-based educational program promotes each child’s development. It is important

that an educational program ensures that learning is a positive encounter. Kindergarten is not about worksheets and school desks. It is about experiencing, exploring and discovering, smelling and feeling, being active, and getting your hands dirty. In our Kindergarten, we achieve this through a play-based curriculum.

### 3 aspects that make our Kindergarten stand out:

- **Play-based approach:** Your child will learn through play in our Kindergarten. Our teachers create an environment in which your child wants to learn and develops an intuitive curiosity.
- **Bilingual environment:** Our fully bilingual kindergarten ensures that your child will become proficient in both German and English by the end of the program, with multilingualism offering enhanced cognitive abilities, improved communication skills, and a greater appreciation for diverse cultures.
- **Preparation for school:** Our SK students spend one day a week with our Grade 1 students, providing them with a seamless transition from kindergarten to primary school by allowing them to experience firsthand the routines and environment of their future school life.



**“We enrolled our son in the kindergarten because, as half German, we wanted him to learn the language and culture. The teachers really understand our child and support his learning, especially with the STEM focus, which he loves! The science experiments and coding opportunities are a big hit. We also enjoy the warm, familiar community and the thoughtful events, like Mother’s Day, where our son was so excited to share his classroom with me. The dedicated teachers made us feel confident that our child was in great hands, and that’s why we’re staying for another year.”**



Nevine Demitri  
*Mother of a son in Senior Kindergarten*

# Syllabus

A typical day for an SK student

Time	Monday	Tuesday	Wednesday	Thursday	Friday
07:30			Arrival		
08:30			Morning Circle		
09:15			Snack		
09:45	Music	Storytime	Art	French	
10:30	Free Play / Activity	Music	Free Play / Activity	Sports in Gym	Free Play / Activity
11:15	Free Play / Activity	Free Play / Activity	Story Time	Free Play / Activity	
11:45	German Phonics	English Phonics	German Phonics	English Phonics	Outdoor Play
12:30			Outdoor Play / Goodbye Circle		
1:15 - 1:45			Lunch		
1:45 - 5:30			Afternoon Care		



# Tuition Fees 2026/2027

	Local Tuition	Corporate-funded Tuition*
Registration Fee	\$150	\$150
Acceptance Fee	\$2,500	\$2,500
School Tuition 8:30 AM – 1:15 PM	\$14,460	\$22,990
Aftercare until 3:15 PM for JK/SK	\$2,700	Included
Aftercare until 5:30 PM for JK/SK	\$3,450	\$750

Additional costs apply for textbooks, extra-curricular activities, school uniforms, and overnight camps.

\* Families with non-permanent residency in Canada, holding a fixed-term entry permit and receiving employer support for tuition fees, must follow the corporate-funded tuition schedule. To be eligible for the local tuition rate, written confirmation from the employer may be required.

## Discounts

- A sibling discount of 10% of the tuition fee is granted for the second and subsequent sibling(s) in the order of birth.
- Early-payment discount of 3% on the Tuition Fee for the following academic year when full payment is received by June 1.
- Each student enrolled subject to the tuition schedule for local families will receive an annual \$2,500 tuition fee reduction when they enter the fifth year of enrollment and all subsequent years.

## Tuition Assistance

GIST awards tuition assistance in a limited number of cases, taking into account the students' financial needs, as assessed by Apple Financial Services. Assistance is limited to a maximum of 50% of the cost of tuition and does not apply to registration, acceptance and extended care fees. Eligibility will ultimately be determined at the discretion of the Finance Committee of the Board of Trustees.

In order to qualify for tuition assistance, an application through Apple Financial Services is required. Apple Financial Services provides the financial analysis and assistance recommendations for over 170 independent school across Canada and supports GIST in making a sound decision on tuition assistance.

# School Life

## Afternoon Care

We offer afternoon care for children starting from Junior Kindergarten until 5:30 pm. Families can choose either an annual or daily plan, with a discounted flat rate available for those who book in advance for the entire school year.

## Library

The GIST library, located in our Scout Hall, offers a collection of books in both German and English. Students are welcome to borrow books, which should be returned the following week.

## School Uniforms

All students at GIST wear a school uniform, with children in the Kindergarten group wearing theirs once a week. Uniforms can be purchased through our partner, In-Schoolwear ([www.inschoolwear.com](http://www.inschoolwear.com)), and we also offer a small selection of second-hand items at the school.

## Clubs

Our students can participate in a range of engaging after-school activities, typically held from 1:45 pm to 3:15 pm (with extended hours for older students). Popular clubs include sports, cooking, music, and more. Since 2023, we've partnered with CodeItHacks to offer exciting clubs in coding and robotics. Club offerings change each term, ensuring a broad and diverse selection of activities throughout the year.

## Lunch

We make lunchtime easier for families four days a week. Once a week, students can enjoy pizza lunch, and twice a week, we partner with the Lunch Lady program to bring warm meals directly to classrooms. Additionally, our Pop-up Mensa, prepared by our neighbors at Islington United Church, serves a hot meal once a week for all students. We believe eating together strengthens our sense of community, making it an integral part of school life. On days when lunch isn't provided, students bring their own meals and have access to a microwave.





# Our Admissions Process



Whether you are curious about our school or ready to enroll your child, we are always happy to assist you throughout the admissions process. Find out how to start.

## 1. Explore

Scan the QR code on this page and download our extended brochure for more information on schedules, tuition fees and other parents.

## 2. Apply

Fill out the form on our online application portal at [gistonline.ca/admissions](http://gistonline.ca/admissions). Once we receive your application, the non-refundable application fee of \$150, and all supporting documents, we will start processing.

## 3. Meet

After reviewing your application, arrange an in-person tour or call with our Admissions team. We also offer Trial days for prospective students and can connect you to our family ambassadors.

## 4. Enroll

Once the school receives the non-refundable application fee and our principal has approved the application, the Admissions Office will send you the enrollment agreement. As soon as you return the signed enrollment agreement and pay the enrollment fee of \$2,500, we will secure the spot for your child.

**“Even from a distance, with a time difference of 13 hours and a rather unique situation, the admissions process with GIST was smooth, personal, and supportive.”**



Jenny Lin  
*Mother of a son in Grade 8*

**Get our extended admissions brochure  
with tuition fees, schedules and more here:**



**Or request it through our website  
[www.gistonline.ca/admissions](http://www.gistonline.ca/admissions)**

